

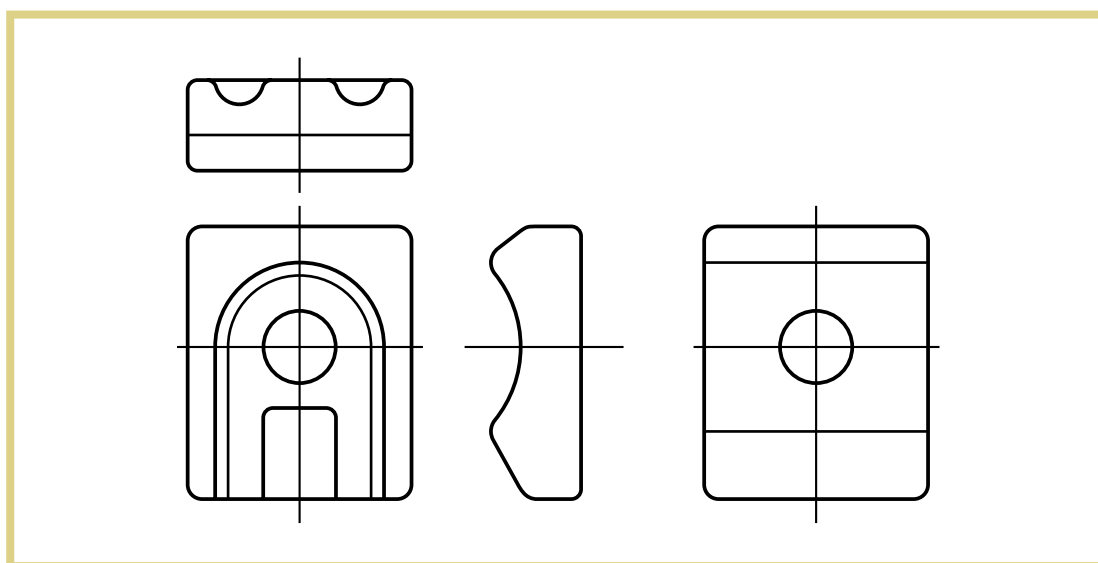
Attacchi fermadente e molle varie

Tine holders and assorted springs

Fixations et ressorts

Zinken befestigungen und federn

Piezas de sujecion y muelles

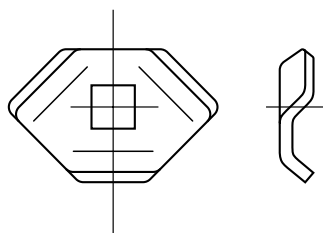


attacchi fermadente e molle varie
tine holders and assorted springs

denominazione
denomination

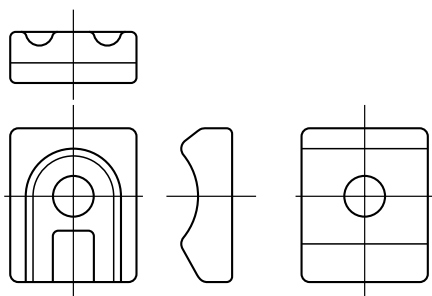
rif.
la spirale

rif.
originale



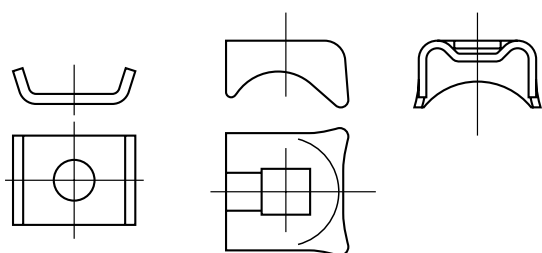
PRESSA
JOHN BALLER

LS99001



ANDANATORE
KUHN

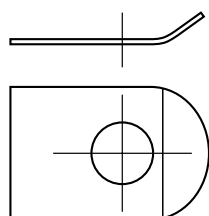
LS99002



AUTOCARICANTE
DECHENTRAITER

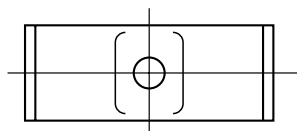
LS99003

42272.3



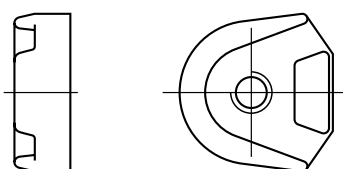
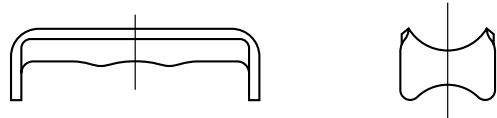
RANGHINATORE
CORMICK

LS99004



AUTOCARICANTE
BERNI
EUROPA

LS99005



AUTOCARICANTE
MENGELE

LS99006

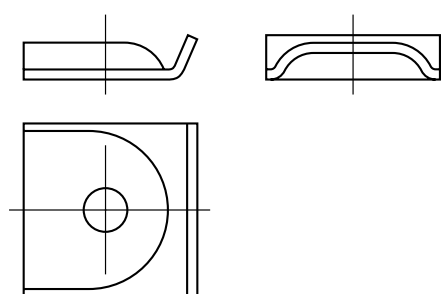
04035692

attacchi fermadente e molle varie
tine holders and assorted springs

denominazione
denomination

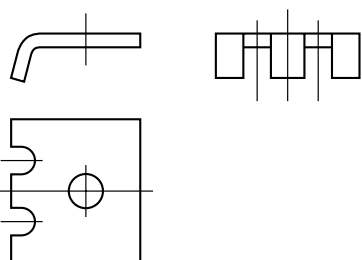
rif.
la spirale

rif.
originale



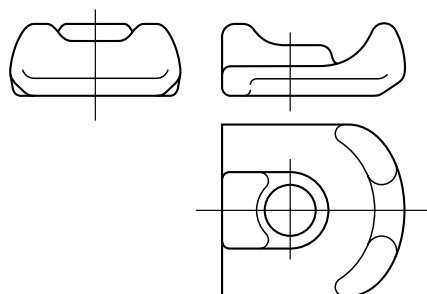
RANGHINATORE
REPOSSI

LS99007



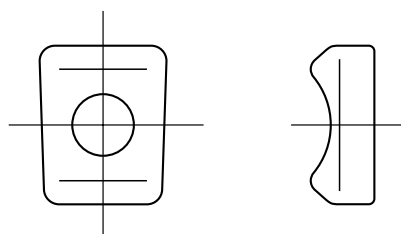
RANGHINATORE
FORT
F2

LS99008



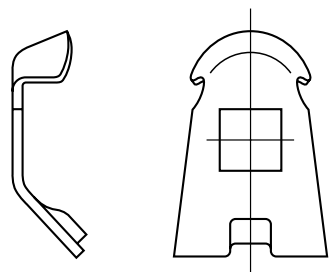
GIRELLO
INFERIORE

LS99009



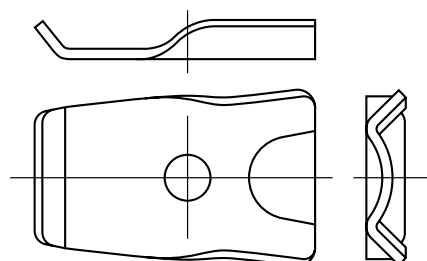
GIRELLO
SUPERIORE

LS99010



VOLTAFIENO
LINCE

LS99011



RANGHINATORE
ORIONE

LS99012

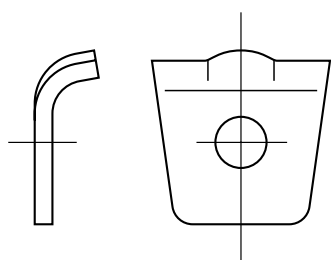
294036A

attacchi fermadente e molle varie
tine holders and assorted springs

denominazione
denomination

rif.
la spirale

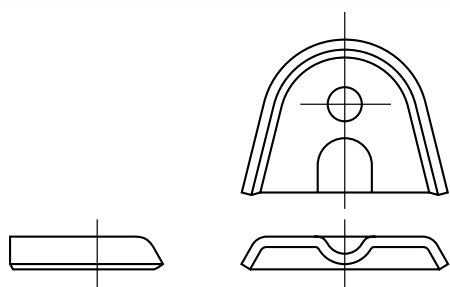
rif.
originale



AUTOCARICANTE
KRONE

LS99013

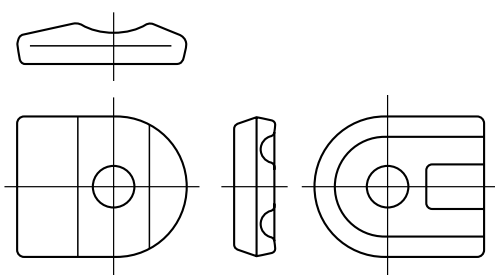
242004



RANGHINATORE
HEUMA

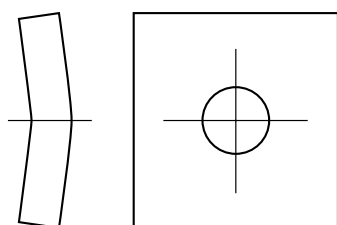
LS99014

001141



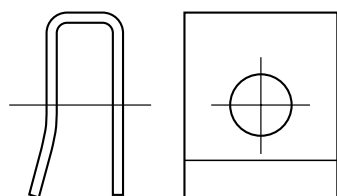
ANDANATORE
UNIVERSALE

LS99015



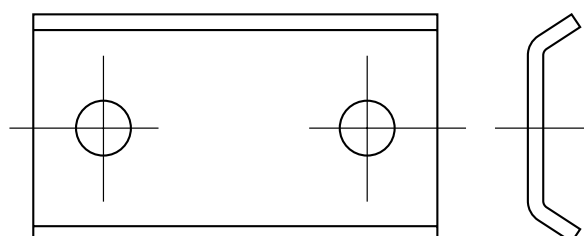
GIRELLO
**SLAM
FONTANESI**

LS99016



ANDANATORE
STOLL

LS99017



SEMINATRICE
**CARRARO
NODET**

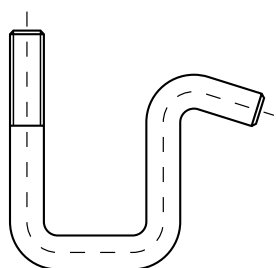
LS99018

attacchi fermadente e molle varie
tine holders and assorted springs

denominazione
denomination

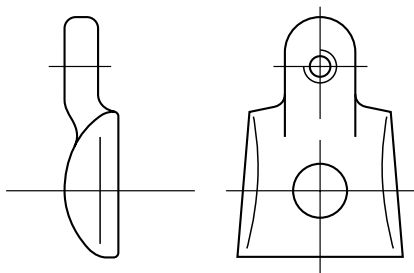
rif.
la spirale

rif.
originale



STRIGLIATORE
VIBROCULT
30 x 30

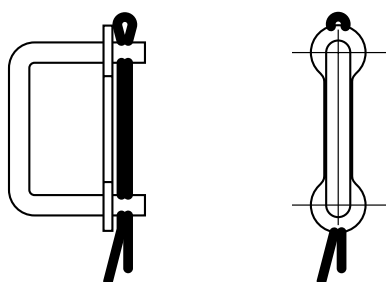
LS99019



GIRELLO
FAHR

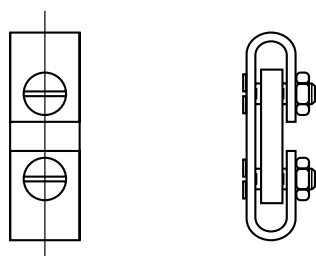
LS99020

06565650



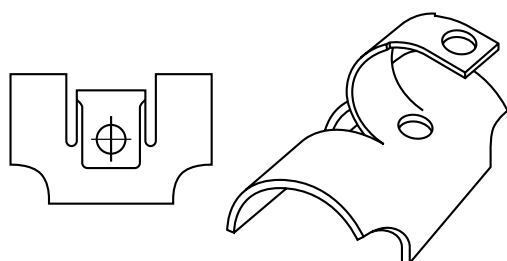
GIUNTO CATENA
in filo

LS99021



GIUNTO CATENA
in piatto

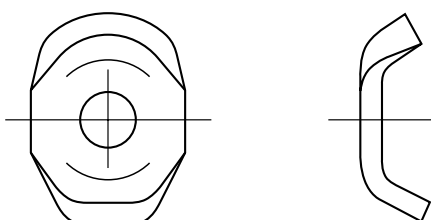
LS99022



PRESSA
WELGER

LS99023

0338300000



ANDANATORE
GALFRÈ

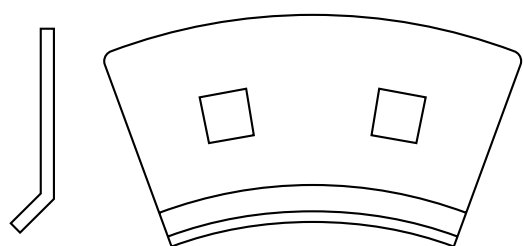
LS99024

attacchi fermadente e molle varie
tine holders and assorted springs

denominazione
denomination

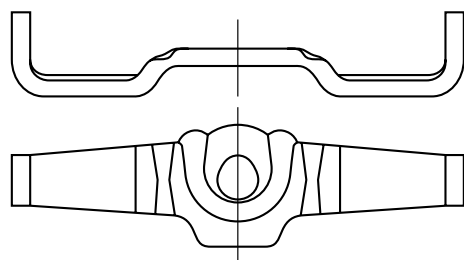
ref.
la spirale

ref.
originale



RANGHINATORE
VICON

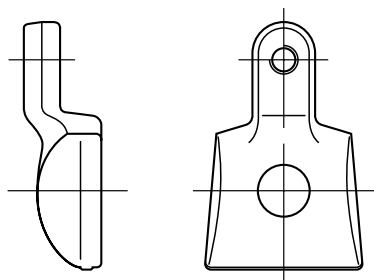
LS99025



GIRELLO
PZ FANEX

LS99026

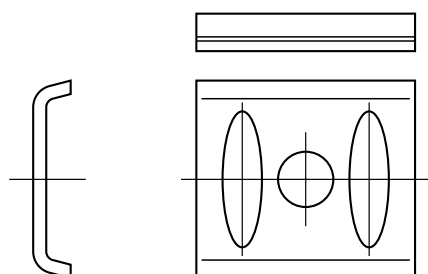
GZ280V



GIRELLO
**FAHR
MORRA**

LS99027

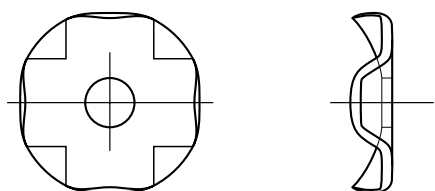
FAHR 06565744
MORRA 010834



PIASTRINA
FISSAGGIO
MORRA

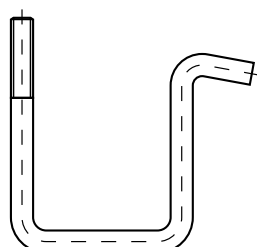
LS99028

06103038292



RONDELLA
FISSAGGIO
VIBROCULT

LS99029



STRIGLIATORE
VIBROCULT
50 x 50

LS99030

attacchi fermadente e molle varie
tine holders and assorted springs

denominazione
denomination

rif.
la spirale

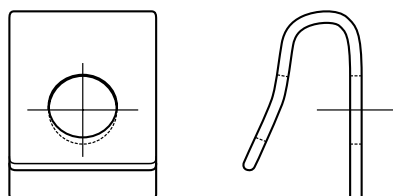
rif.
originale



GIRELLO
FELLA

LS99031

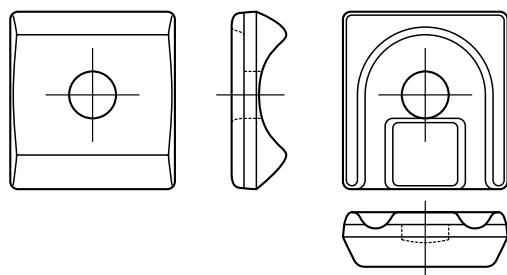
477399
150094
487380



ANDANATORE
CLAAS

LS99032

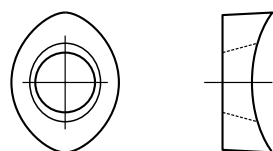
953643



ANDANATORE
KUHN

LS99033

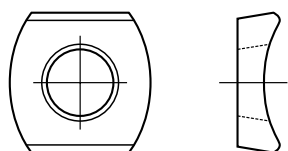
57717410



ANDANATORE
KRONE

LS99034

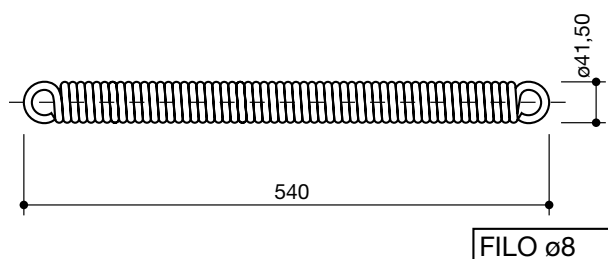
001530211



ANDANATORE
CLAAS

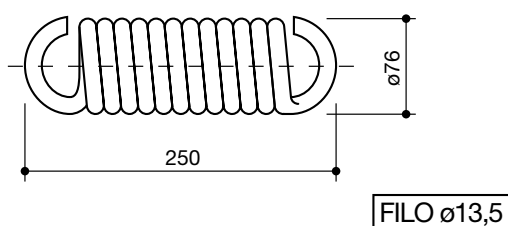
LS99035

909508.2



MOLLA
TRAZIONE
ROTATIVA
PZ

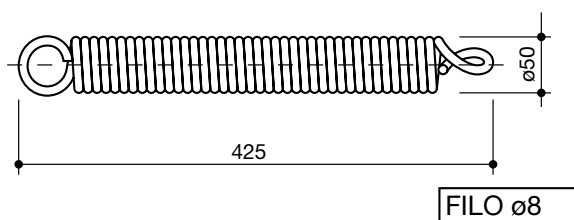
LS99301



MOLLA
TRAZIONE
ROTOPRESSA
KRONE

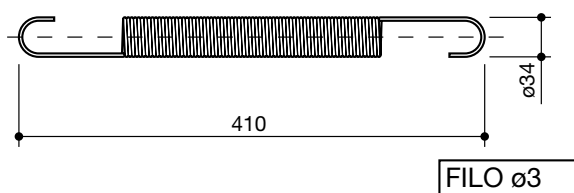
LS99302

9396291



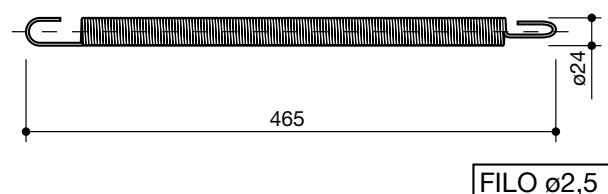
MOLLA
TRAZIONE
ROTATIVA
FORT

LS99303



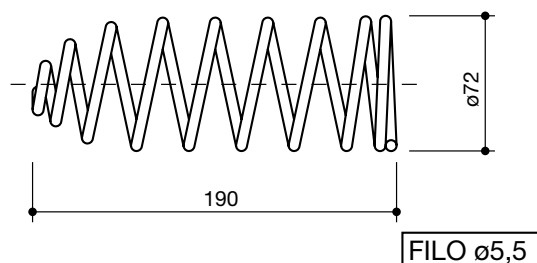
MOLLA
PARALLELE
FIAT

LS99304



MOLLA
PARALLELE
DEUTZ

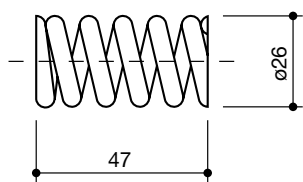
LS99305



MOLLA
BRACCIO
SINISTRO
BCS

LS99306

20137

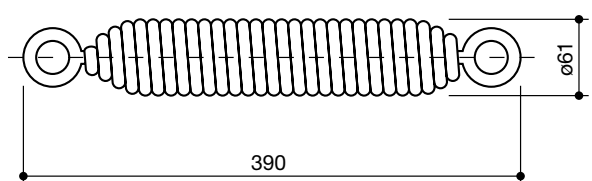


FILO $\varnothing 5,5$

MOLLA
BIELLA
BCS

LS99307

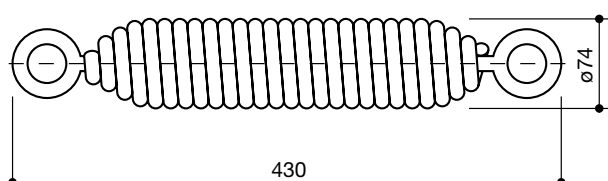
58002430



FILO $\varnothing 10$

MOLLA
ARATRO
MORO
10

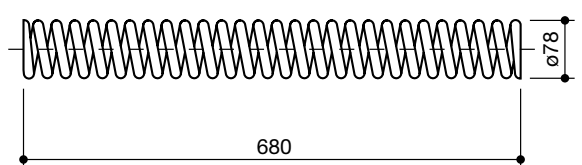
LS99308



FILO $\varnothing 12$

MOLLA
ARATRO
ERMO
12

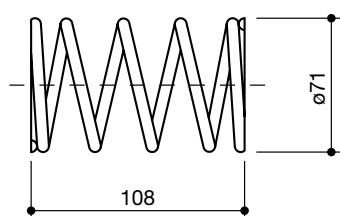
LS99309



FILO $\varnothing 13$

MOLLA
BREGA
13

LS99312

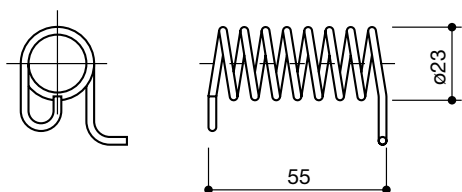


FILO $\varnothing 6$

MOLLA
FRIZIONE
BCS

LS99313

58002306

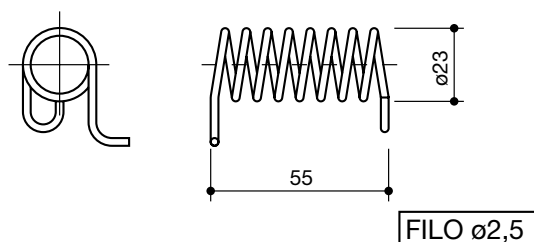


FILO $\varnothing 2,5$

MOLLA
TORSIONE
PZ
099

LS99314

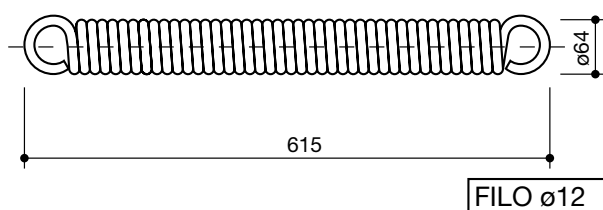
PZ099



MOLLA
TORSIONE
PZ
100

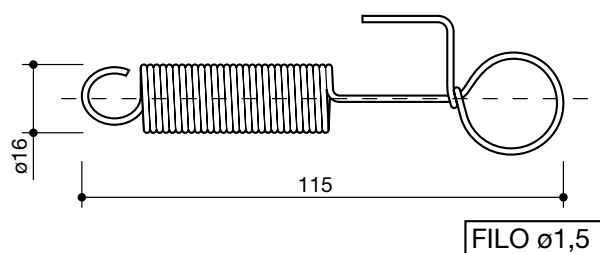
LS99315

PZ100



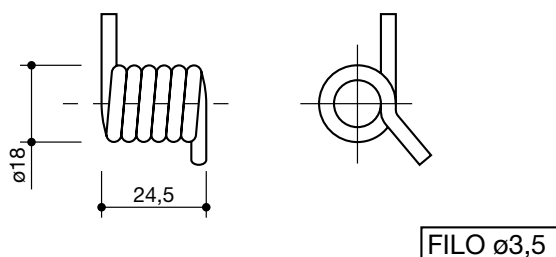
MOLLA
TRAZIONE
ROTATIVA
GALFRÈ

LS99316



MOLLA
PROTEZIONE
PARALAMA

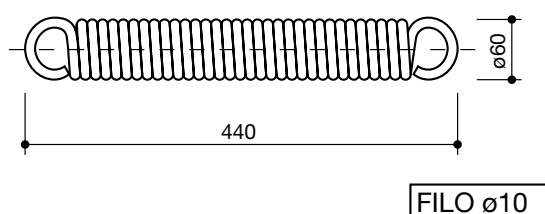
LS99317



MOLLA
FERMADENTE
GIRELLO
LELY

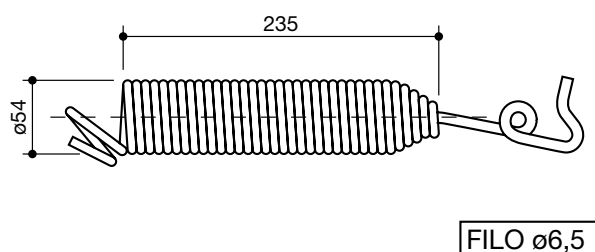
LS99318

4101500540



MOLLA
SPAZZANEVE

LS99319



MOLLA
TRAZIONE
TONUTTI

LS99320

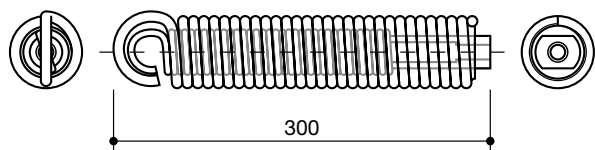
RC40AZ019

attacchi fermadente e molle varie
tine holders and assorted springs

denominazione
denomination

rif.
la spirale

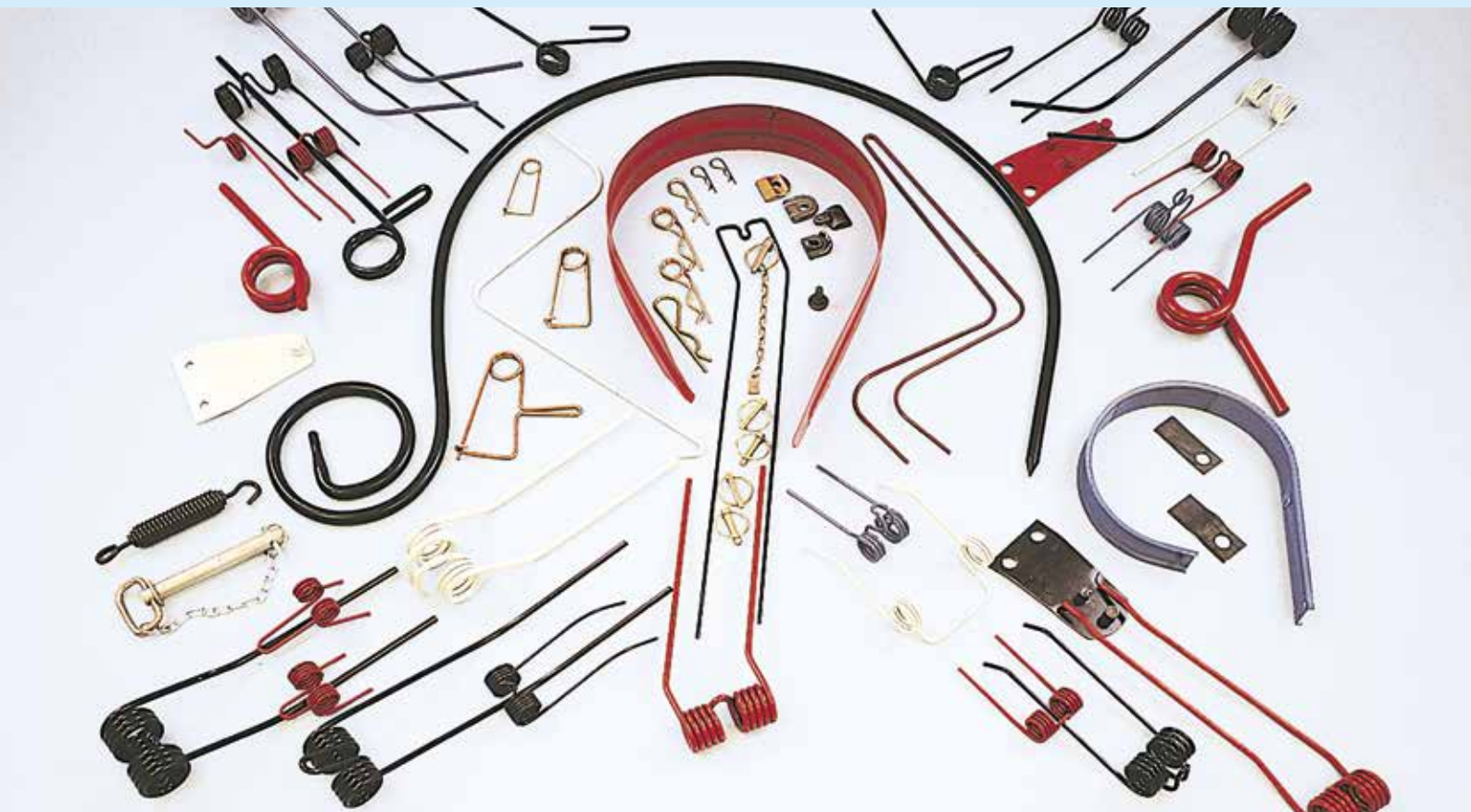
rif.
originale



MOLLA
TRAZIONE
CLAAS

LS99321

9511990



LA SPIRALE srl
via Milano, 8 - 20084 Lacchiarella (MI) - ITALY
tel. +39 02 90076666 +39 02 9008095
fax +39 02 9007338
www.laspiralemolle.it - e-mail: laspirale@tin.it